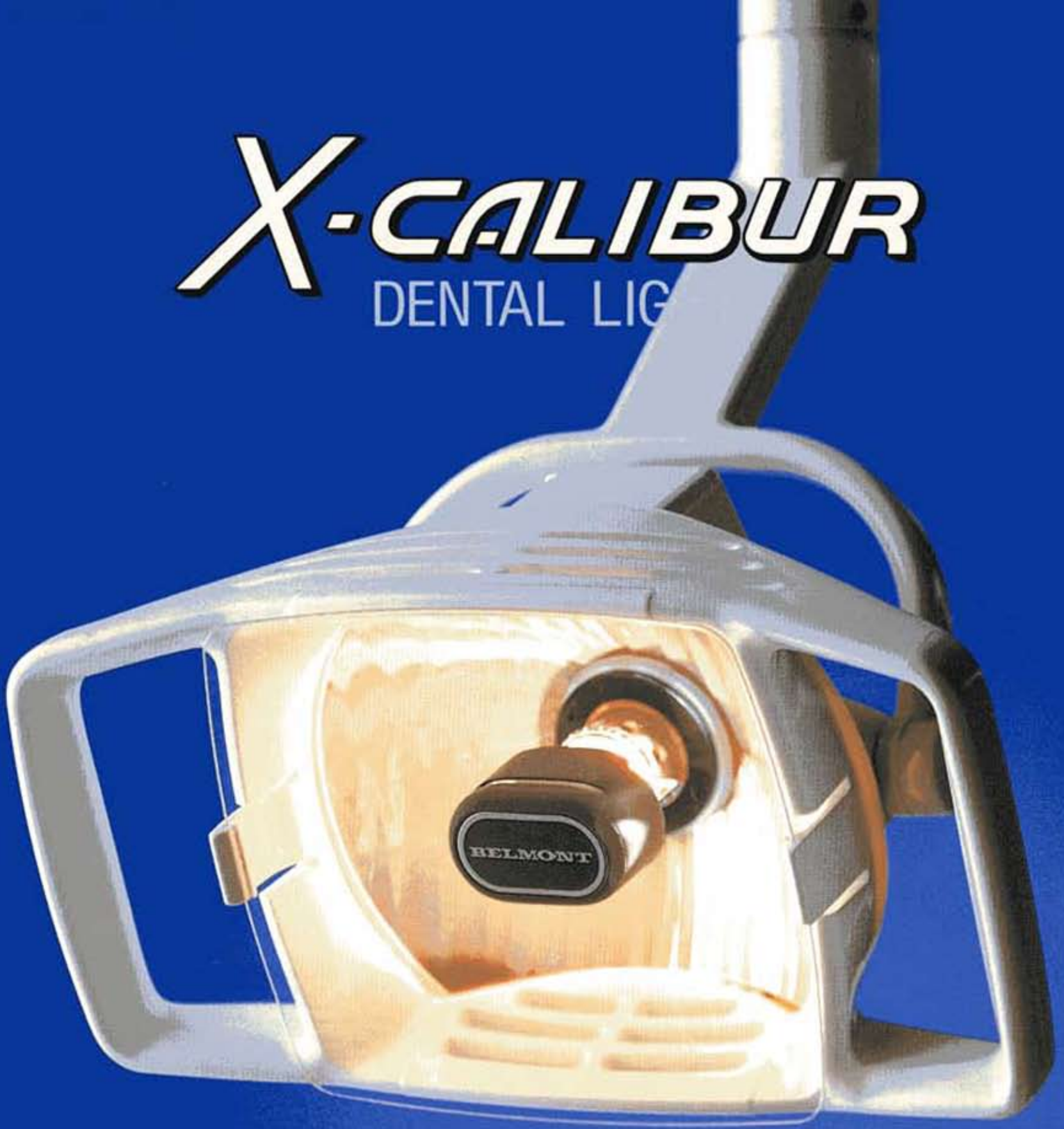


# ***X-CALIBUR***

DENTAL LIGHT



# Cool, Clear, and Color Corrected



Approximates the color of natural daylight.

---

## Unit Mount Light : HLU

---



Low and High intensity. The on/off switch is accessible for easy operation.

---

## Ceiling Light : HLC

---



Models are available for 8', 9', and 10' ceiling heights.

# X-CALIBUR



- Shade matching is improved because of the approximation of natural daylight.
- Diagnostic evaluation of the skin and mucous membrane is simplified.
- Feathered edges minimize eye fatigue.

Light is concentrated in the oral cavity-not in the patient's eyes.

---

## Track Light: HLT

---



Models for 8' and 9' ceilings. Counterbalanced arms.

---

## Wall Mount Light: HLW

---



Accurate positioning for viewing the oral cavity.

---

**Cabinetry Mount Light: HLPW** Not shown.

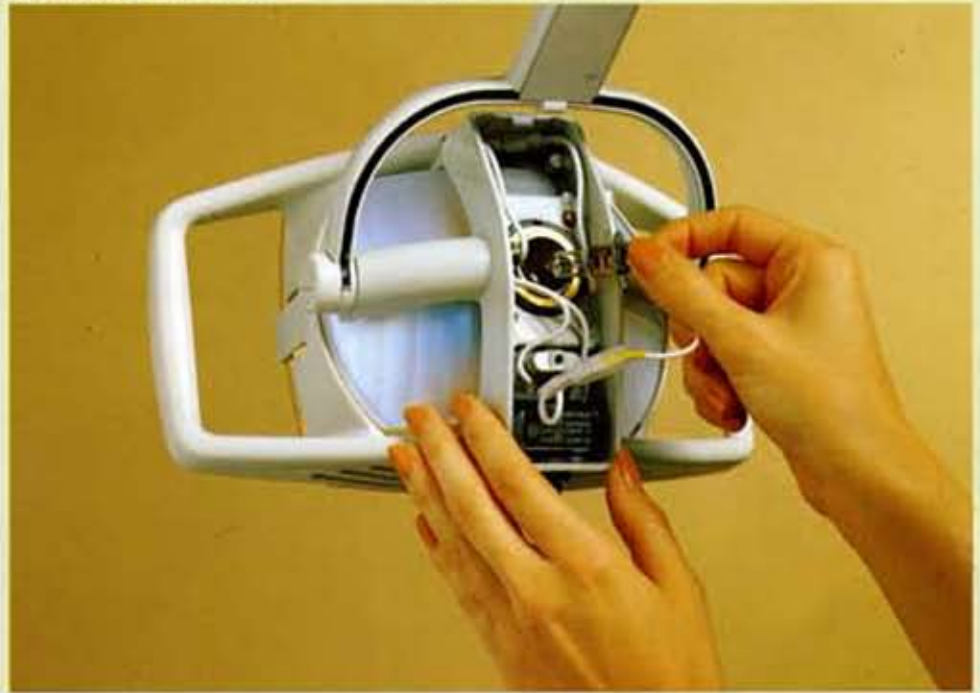
---

## Specifications

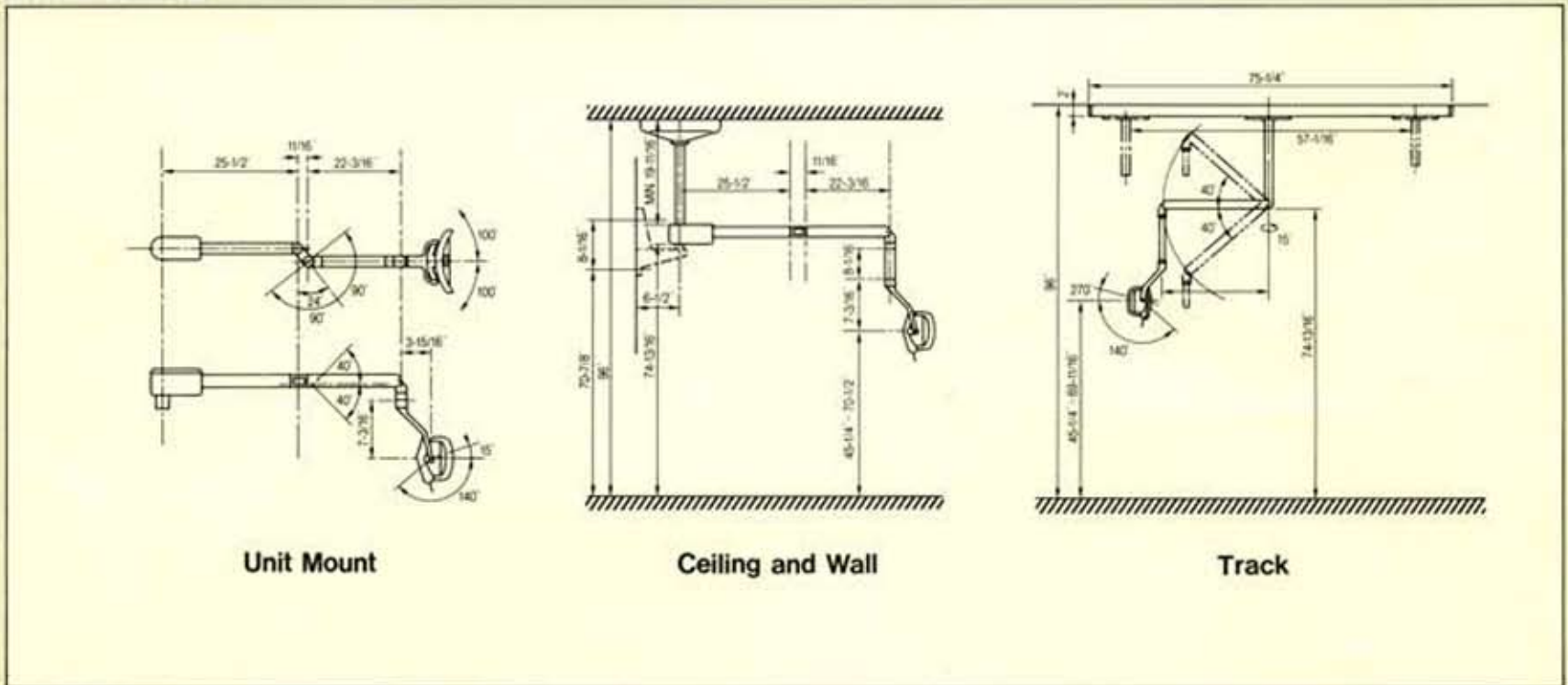
Input Voltage	115V
Output Voltage	12V High 10.5V Low
Power Output	55W High 50W Low
Type Bulb	Tungsten Halogen Type JA 12V-55W
Focal Distance	28"
Light Output	High 28,000Lux 2,600FTC
	Low 15,000Lux 1,400FTC
Color Temperature	3,800° Kelvin
Light Pattern	3" x 7" at 28" Focal Distance
Color Availability	White

## Simple Bulb Replacement

Tools are not required. The bulb is replaced in minutes.



## Dimensions



# 2 Year Warranty

(Bulb excluded)

X-CALIBUR light models must be installed and serviced by authorized personnel.

Colors, specifications and models subject to change without notice.



## Belmont

BELMONT EQUIPMENT CORP.

101 Belmont Drive, Somerset, New Jersey 08873

(908)469-5000 1-800-223-1192