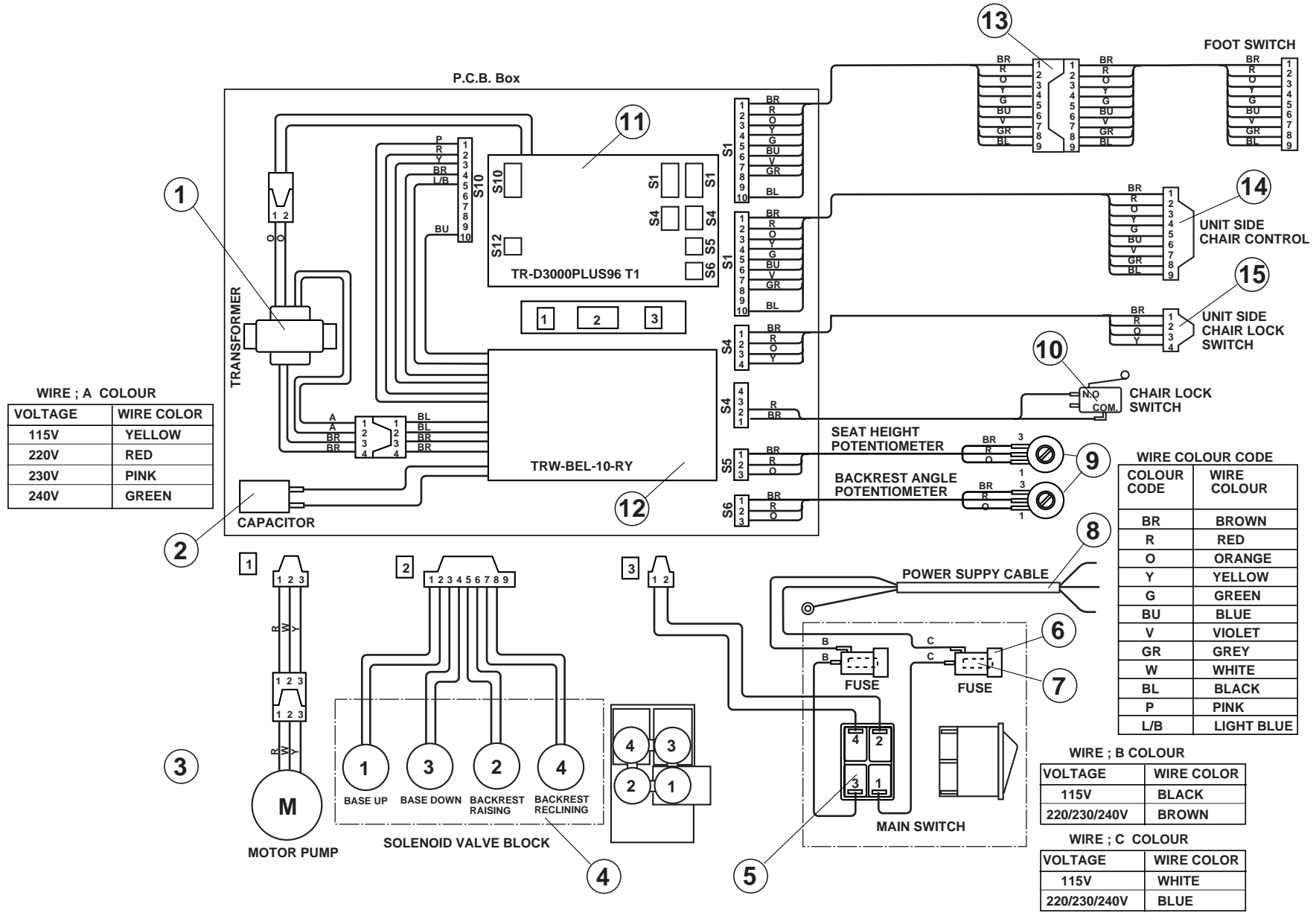


9. ELECTRIC SECTION



9. ELECTRIC SECTION

ID. NO.	PARTS NO.	DESCRIPTION	Q'TY
1	C07- X2107	Transformer (100V)	1
	C07- X2801	Transformer (115V)	(1)
	C07- X2109	Transformer (220V)	(1)
	C07- DNPR02A0	Transformer (230V)	(1)
	C07- X2110	Transformer (240V)	(1)
2	C07- X5001	Capacitor (100V)	1
	C07- X5002	Capacitor (115/220/230/240V)	(1)
3	C07- D6063	Motor Pump (5LP) (100V)	1
	C07- D6065	Motor Pump (5LP) (115V)	(1)
	C07- D6067	Motor Pump (5LP) (220V)	(1)
	C07- D6069	Motor Pump (5LP) (230/240V)	(1)
4	C07- X8120	Solenoid Valve Block (100V)	1
	C07- X8121	Solenoid Valve Block (115V)	(1)
	C07- X8122	Solenoid Valve Block (220V)	(1)
	C07- X8123	Solenoid Valve Block (230/240V)	(1)
5	C07- DELR10AA	Main Switch (100/115V)	1
	C07- X6678	Main Switch (220/230/240V)	(1)
6	C07- DEQR01A0	Fuse Holder	1
7	C07- X5617	Fuse (100/115V, 10A)	1
	C07- X5990	Fuse (220/230/240V, 6.3A)	(1)
8	C07- X5035	Power Supply Cable (VDE)	1
	C07- X6118	Power Supply Cable (BSI)	(1)
9	C07- X6517	Potentiometer (5K)	2
10	C07- X6313	Micro Switch (D2MV01L2IC3)	1
11	C07- DNPR78A0	Control P.C.B.	1
12	C07- X8115	Relay P.C.B. (100/115V)	1
	C07- X8116	Relay P.C.B. (220/230/240V)	(1)
13	C07- DNPR80A0	Wire Harness (Foot Control)	1
14	C07- DNRR15A0	Wire Harness (Unit Side Chair Control)	1
15	C07- DNRR16A0	Wire Harness (Unit Side Chair Lock)	1

